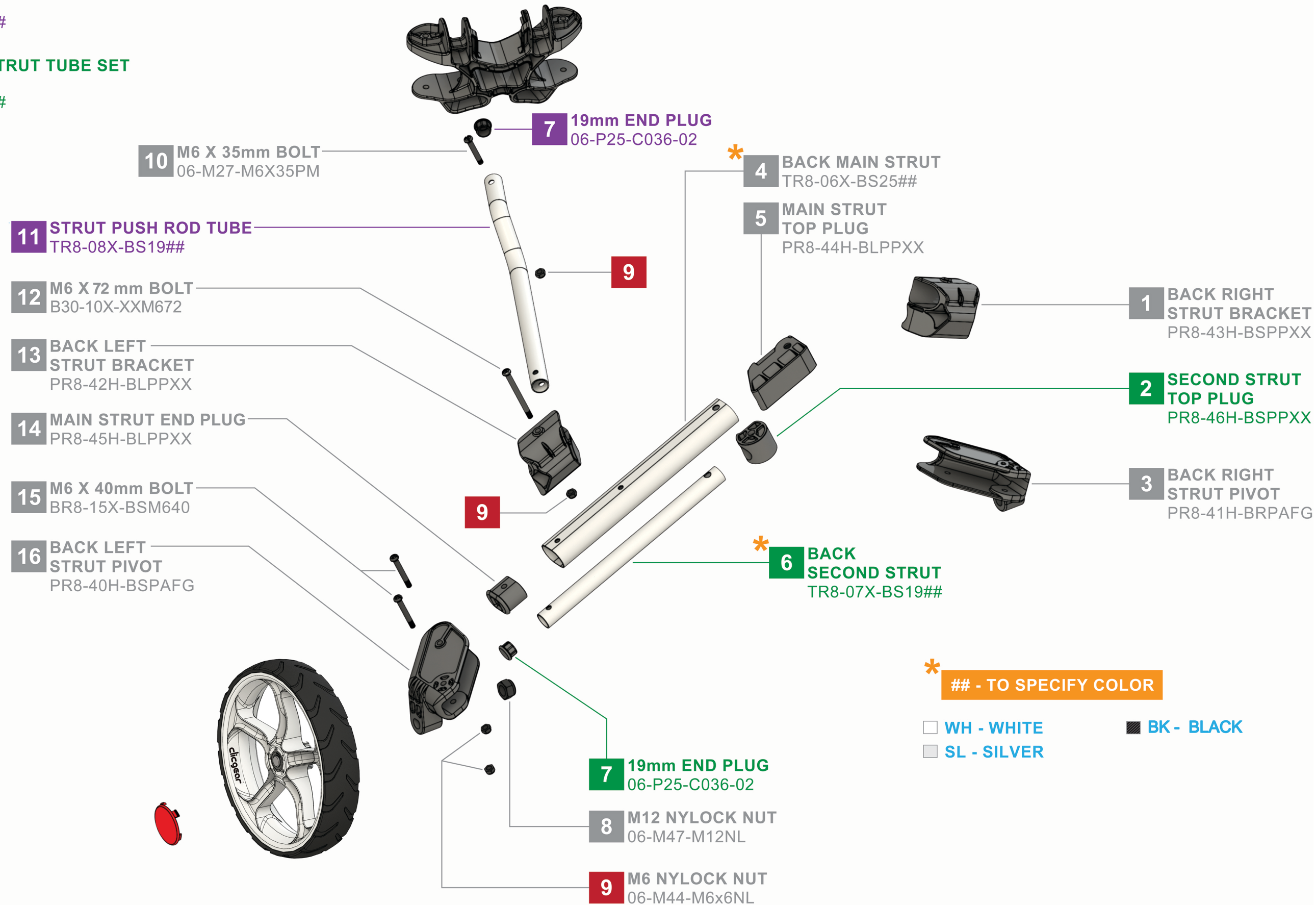


# (8)+BACK STRUT ASSEMBLY

**T1** STRUT PUSH ROD TUBE SET  
c/w END CAPS  
T08-01X-BSAS##

**\* T2** SECONDARY STRUT TUBE SET  
c/w END CAPS  
T08-02X-BSAS##



**10** M6 X 35mm BOLT  
06-M27-M6X35PM

**7** 19mm END PLUG  
06-P25-C036-02

**\* 4** BACK MAIN STRUT  
TR8-06X-BS25##

**5** MAIN STRUT  
TOP PLUG  
PR8-44H-BLPPXX

**11** STRUT PUSH ROD TUBE  
TR8-08X-BS19##

**12** M6 X 72 mm BOLT  
B30-10X-XXM672

**13** BACK LEFT  
STRUT BRACKET  
PR8-42H-BLPPXX

**14** MAIN STRUT END PLUG  
PR8-45H-BLPPXX

**15** M6 X 40mm BOLT  
BR8-15X-BSM640

**16** BACK LEFT  
STRUT PIVOT  
PR8-40H-BSPAFG

**1** BACK RIGHT  
STRUT BRACKET  
PR8-43H-BSPPXX

**2** SECOND STRUT  
TOP PLUG  
PR8-46H-BSPPXX

**3** BACK RIGHT  
STRUT PIVOT  
PR8-41H-BRPAFG

**\* 6** BACK  
SECOND STRUT  
TR8-07X-BS19##

**7** 19mm END PLUG  
06-P25-C036-02

**8** M12 NYLOCK NUT  
06-M47-M12NL

**9** M6 NYLOCK NUT  
06-M44-M6x6NL

**\*** ## - TO SPECIFY COLOR

☐ WH - WHITE  
☐ SL - SILVER

■ BK - BLACK